

# Ampatex<sup>®</sup> DB 90

▀ Vapour check and airtight layer



- ▶ Standard for roof and wall constructions
- ▶ Compatible with all conventional heat insulation materials
- ▶ Keeps its shape
- ▶ Can be used anywhere
- ▶ Does not attract dust

**Ampatex<sup>®</sup> DB 90 [1,5 m]**  
including 120 m<sup>2</sup> Ampacoll<sup>®</sup> INT



**Roll dimensions**

Length: 100 m / Width: 1,5 m / Area: 150 m<sup>2</sup>

**Pallet contents**

25 rolls = 3'750 m<sup>2</sup>

**Ampatex<sup>®</sup> DB 90 [3 m]**



**Roll dimensions**

Length: 50 m / Width: 3 m / Area: 150 m<sup>2</sup>

**Pallet contents**

24 rolls = 3'600 m<sup>2</sup>

**Technical details:**

s <sub>0</sub> value	23 m
Weight	90 g/m <sup>2</sup>
Thickness	0,33 mm
Fire behaviour	E, EN 13501
CE marking	EN13984:2005-02/2007

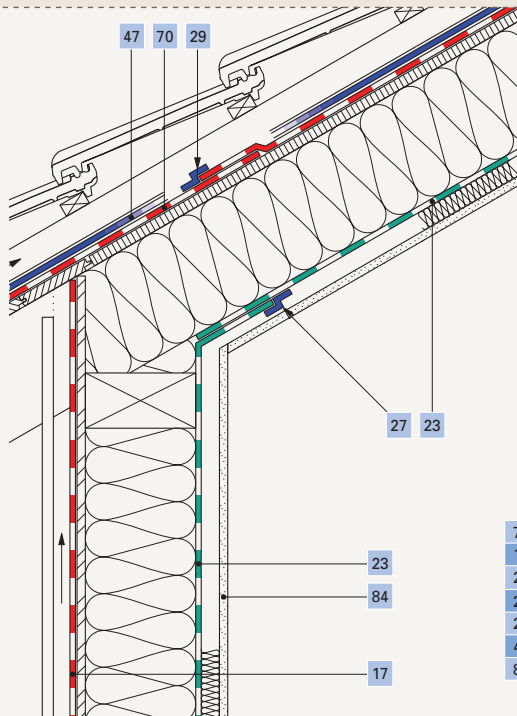
**The safe alternative to all polythene films**

# 10

Jahre Garantie\*  
Ans Garantie  
Anni Garanzia  
Years Warranty

\* Security is part of the system at Ampack. We cover the cost of removal and replacement, and consequential damage, as well as the replacement materials.

ISO 9001:2008  
Swiss Research



70	Ampack roof membrane
17	Ampack wall membrane
23	Vapour check <b>Ampatex® DB 90</b>
27	Adhesive tape <b>Ampacoll® INT</b>
29	Adhesive tape <b>Ampacoll® XT, 60 mm</b>
47	Nail seal <b>Ampacoll® ND.Band</b>
84	Cladding

The following adhesive products are suitable for application on **Ampatex® DB 90**:

- ▶ Ampacoll® XT
- ▶ Ampacoll® AT
- ▶ Ampacoll® INT
- ▶ Ampacoll® Profix
- ▶ Ampacoll® FE
- ▶ Ampacoll® DT
- ▶ Ampacoll® RA
- ▶ Ampacoll® BK 530
- ▶ Ampacoll® BK 535
- ▶ Ampacoll® Connecto

## Drying capacity and interior climate

Drying capacity is the ability of a construction dry out abnormal moisture in a given period of time. This is particularly important for timber structures, as excessive humidity can lead to mold and thus the destruction of the wood itself. **Ampatex® DB 90** prevents the build up of an unpleasant greenhouse type of climate within the building, giving you confidence – both during installation and beyond!

## Installation tips

**Ampatex® DB 90** is both a vapour check and an air seal. All joints, gaps, overlaps, connections and openings must be hermetically sealed. Surface damage must be sealed. In dry interiors, **Ampatex® DB 90** should be used on the warm side of the heat-insulating layer, and in areas where there is an overlap it should be fastened with concealed staples or nails. The smooth, printed side faces into the room and this is the surface onto which the next product should be taped. When laying, make sure that the strips overlap by 10 cm. The overlaps should then be completely covered with the **Ampacoll® INT** supplied. **Ampacoll® DT** adhesive tape is useful where the underlying material cannot be nailed. Finally the lining on the inside is fixed in place. **Ampacoll® BK 530** or **Ampacoll® RA** are used for edge connections. Porous or dusty surfaces should be pretreated with **Ampacoll® Connecto**. Penetrations such as ventilation pipes, conduits, purlins, rafters, etc. should be permanently sealed with **Ampacoll® BK 535**, 50 mm wide. With porous, dusty or rough surfaces, a pretreatment of **Ampacoll® Connecto** is also required.