

# Ampatop® F black



Membrane for façades with open gaps



external

- ▶ UV stable
- ▶ Vapor permeable but nevertheless rainproof
- ▶ 10 year product warranty with gap widths up to 3 cm

## Ampatop® F black [1,5 m] including 50 m<sup>1</sup> Ampacoll® UV



### Roll dimensions

Length: 50 m / Width: 1,5 m / Area: 75 m<sup>2</sup>

### Pallet contents

24 rolls = 1'800 m<sup>2</sup>

## Ampatop® F black [3 m] including 50 m<sup>1</sup> Ampacoll® UV



### Roll dimensions

Length: 30 m / Width: 3 m / Area: 90 m<sup>2</sup>

### Pallet contents

24 rolls = 2'160 m<sup>2</sup>

### Technical details:


s <sub>D</sub> value	0,1 (±0,05) m
Weight	200 (±10%) g/m <sup>2</sup>
Thickness	0,8 mm
Fire behavior	E
Overlap width	15 cm
Gap width up to (vert. and horiz.)	3 cm
Min. width of façade elements	2 x gap width
Outdoor exposure time*	3 months
UV stability	>10 years

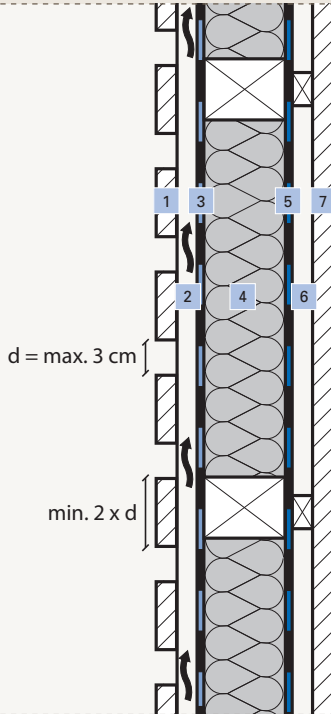
\* before installation of the façade cladding

# 10

Jahre Garantie\*  
Ans Garantie  
Anni Garanzia  
Years Warranty

\* Security is part of the system at Ampack. We cover the cost of removal and replacement, and consequential damage, as well as the replacement materials.

 ISO 9001:2008  
Swiss Research



1	External cladding
2	Ventilation level
3	<b>Ampatop® F black</b> wall membrane
4	Insulation
5	<b>Ampatex®</b> or <b>Sisalex®</b> vapor checks
6	Installation level
7	Internal lining

The following products are suitable for application on **Ampatop® F black**:

- ▶ Ampacoll® UV
- ▶ Ampacoll® Superfix

**Ampatop® F black** should be laid onto the existing support structure, taut and without any folds, with the black side outwards. It should be fastened with staples that must be invisible in the overlap area. It is advantageous to cover them with battens. Both the vertical and the horizontal overlaps should be 15 cm wide and taped down with **Ampacoll® UV**, so that it is windproof. Next the counter battens are laid, thus finally fixing the wind proofing to the support structure. Visible staples that are exposed to the weather could lead to leaks, and as such should be avoided. We recommend fixings that are at a minimum galvanized, with stainless steel being preferable. The counter battens are required to secure further work and prevent any possible weather effects (e.g. wind suction or pressure).

Penetrations and connections should be bonded to make them windproof with **Ampacoll® UV** or **Ampacoll® Superfix**. The connection width should, where possible, be at least 10 cm. If this cannot be done, a mechanical fixing is advisable.

In the case of window and external doors, **Ampatop® F black** should be made windproof with **Ampacoll® UV** or **Ampacoll® Superfix** on the frame and if necessary secured mechanically.

We recommend that the façade cladding is installed as soon as possible. In any event, the cladding must be mounted within three months.

The joint width may be up to 3 cm. The individual elements should be selected so that they are twice as wide.

Ampack AG  
Seebleichstrasse 50  
CH-9401 Rorschach  
Phone +41 (0)71 858 38 00  
Fax +41 (0)71 858 38 37  
ampack@ampack.ch  
www.ampack.eu

